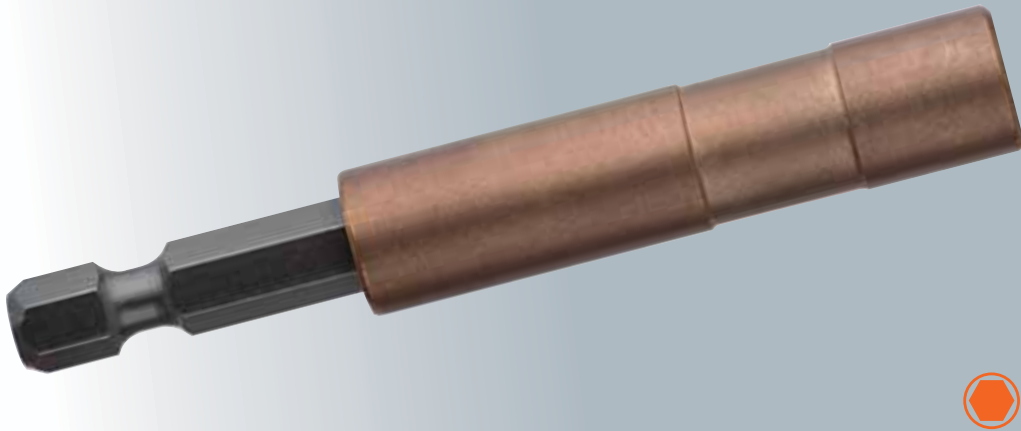


BITHOLDER COPPER BERYLLIUM



FOR VERY
HIGH TORQUES

NON-SPARKING

Features

- Cold forging process.
- Specially hardened sleeve material.
- High grade Copper Beryllium steel.
- Permanent magnet.

Benefits

- High strength and wear resistance.
- Especially suitable for industrial screw connections and screw connections with very high torques or load peaks.
- Compatible with 1/4" Hex, 5/16" Desoutter, 7 mm Fein, 5,5 mm Bosch shanks.
- Magnetic option allows to hold the screws.



COMPATIBLE



5.5 mm BOSCH



1/4" DIN 3126 E 6,3



7 mm FEIN DIN 3126 G 7



5/16" Desoutter



1/4" - E 6,3



1/4"

Lg	Ref.	Gencod	Pack
1 PIECE			
74	UUSA0010001	4013769437853	A



compatible
5/16" Desoutter



1/4"

Lg	Ref.	Gencod	Pack
1 PIECE			
70	UUSA0010004	4013769437877	A



compatible
5.5 mm Bosch



1/4"

Lg	Ref.	Gencod	Pack
1 PIECE			
72	UUSA0010007	4013769437891	A



compatible
7 mm Fein



1/4"

Lg	Ref.	Gencod	Pack
1 PIECE			
74	UUSA0010010	4013769437914	A